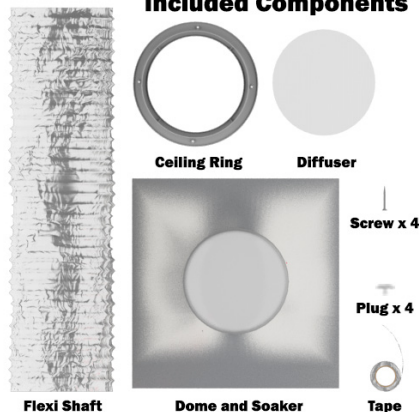


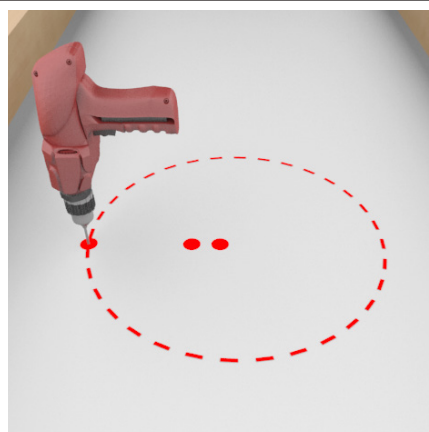
Installation Instructions for 300mm & 400mm Round Skylight Corrugated Roof

Included Components



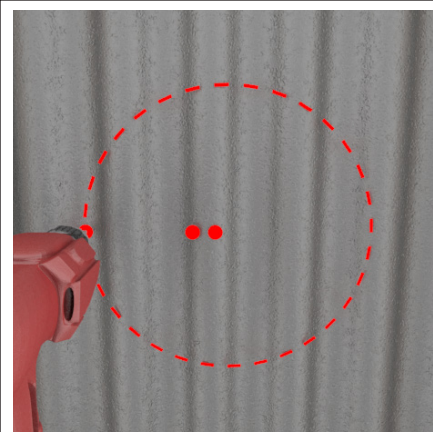
Tools Required for installation:

- Tape Measure
- Jigsaw
- Cordless drill with phillips head piece (Star)
- Silicone gun and silicone
- Pencil or Marker
- Plaster knife (optional)
- Pliers (optional)
- Tinsnips



Using a drill, mark the edge of where the ceiling ring will be located in the ceiling.

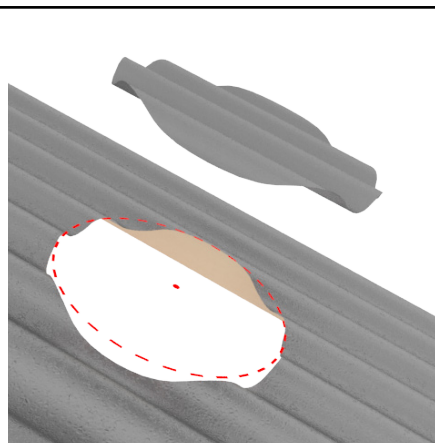
Mark two more holes within the area to indicate direction.



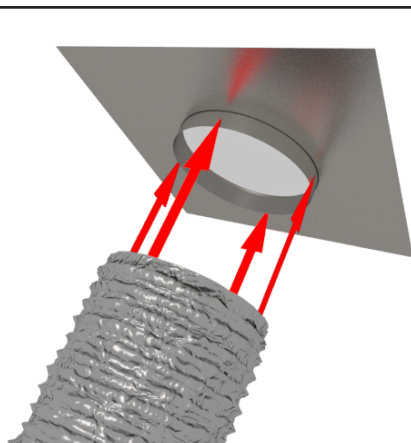
Using a drill, mark the edge of where the dome ring will be located on the roof sheeting.

Mark two more holes within the area to indicate direction.

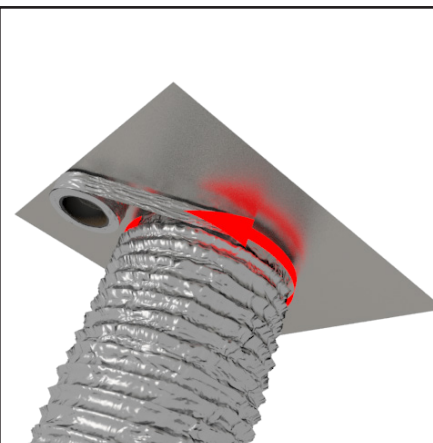
**Avoid installing over laps in sheets. If this cannot be avoided, must seal to highest point of laps, ie: ridge cap.*



Using a jigsaw or tinsnips, cut a circle in the roofing sheet 10mm larger than the flexi shaft diameter.

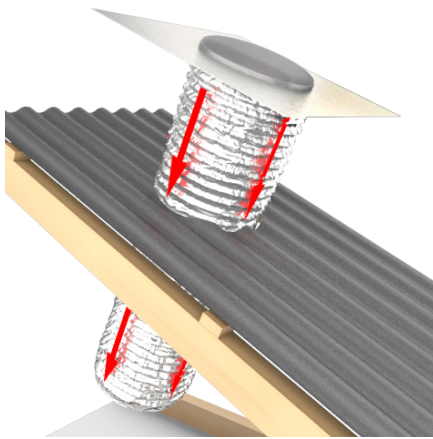


Slip the flexi shaft over the metal collar on the underside of the skylight dome.

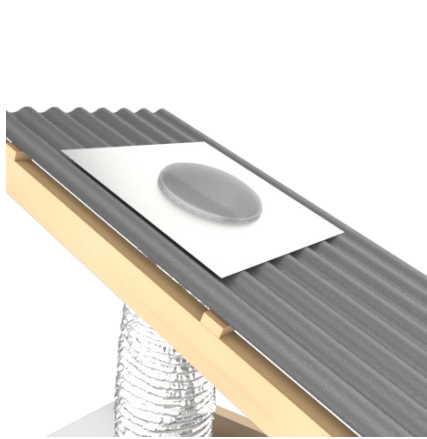


Fix the flexi shaft to the collar on the underside of the dome using the aluminium tape provided.

**Be sure to save some tape for the ceiling ring at a later stage.*

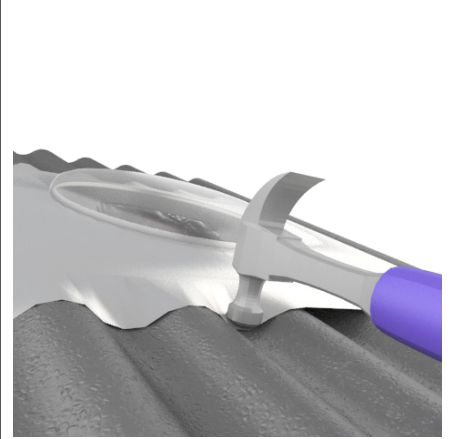


Drop flexi shaft through the opening in the roof sheeting.

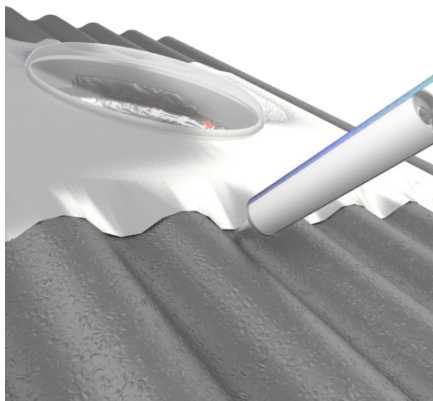


Sit soaker tray on the roof sheeting.

Assure the side labelled 'Top' is located at the top side of the roof.



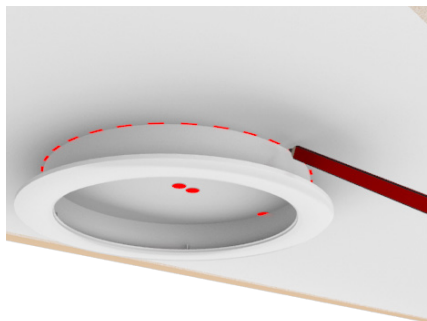
Using a hammer or rubber mallet, gently form the edges of the tray to match the roof profile.



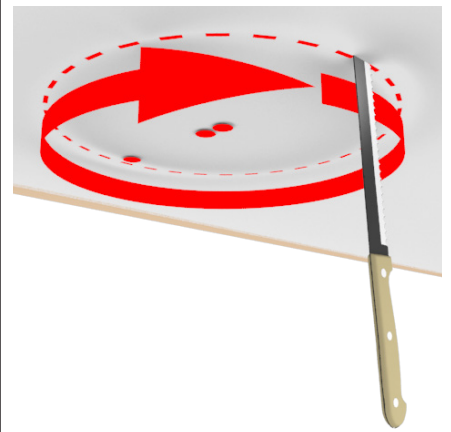
Use silicone to seal under edges of the top and bottom of the tray to roof sheeting.

Fix in place with several tech screws or pop rivets.

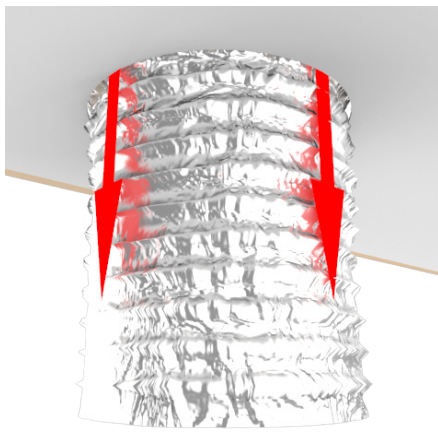
Be sure not to silicon over condensation hole at the bottom of the clear acrylic dome.



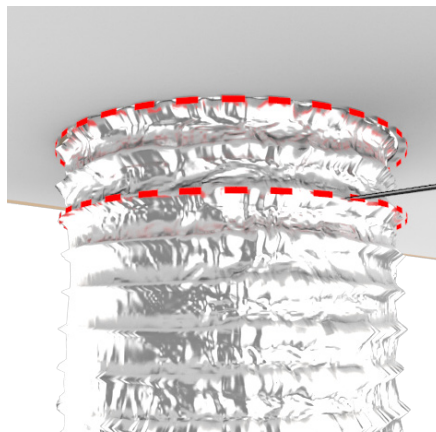
From inside the building (looking up at ceiling) locate the original hole for position ceiling ring.



Using a plaster knife or jigsaw, cut out the plaster circle and remove.

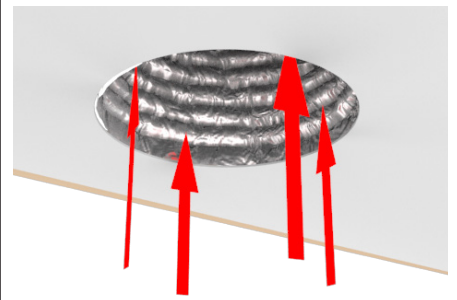


Pull excess flexi shaft through hole in ceiling.

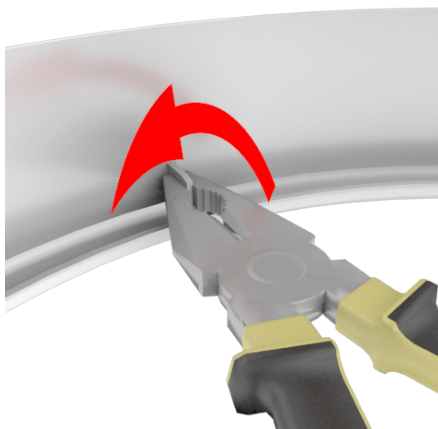


Cut off excess flexi duct 2 ribs below ceiling level.

Dispose of excess flexi duct.



Push hanging flexi shaft back up into roof cavity.

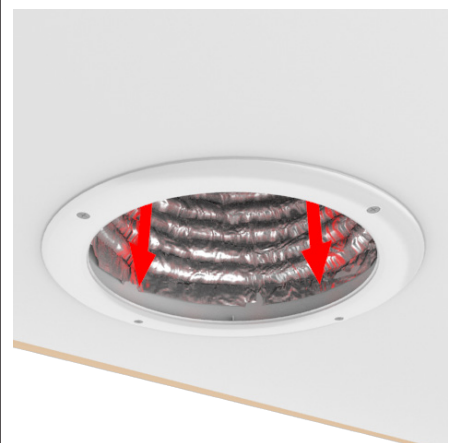


For non ventilated skylights: Using pliers, grip and twist white molded tabs inside ceiling ring to snap off.

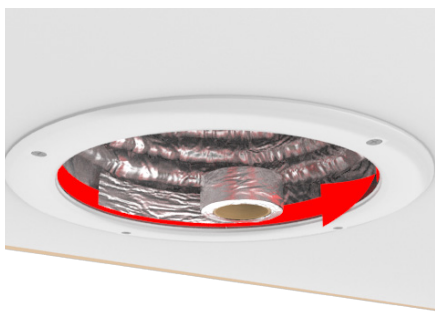
For vented skylight: Leave white molded tabs in place.



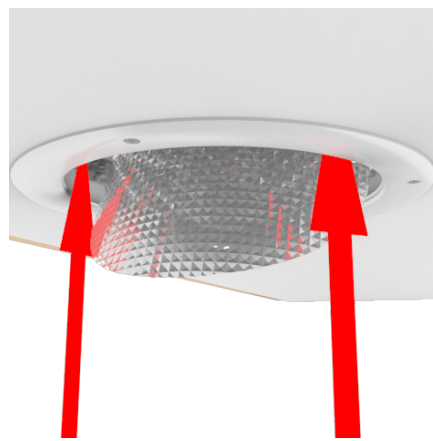
Using cordless drill, fix ceiling ring to ceiling with screws provided.



Position flexi shaft on inside of ceiling ring collar at ceiling level.



Attach flexi shaft to ceiling ring with aluminium tape provided.



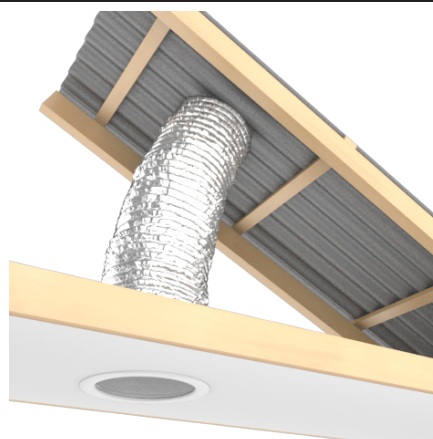
Gently bend the diffuser panel to allow access through ceiling ring.



Let diffuser panel rest flat in ceiling ring.



Install white plugs provided into the screw holes in ceiling ring to finish off.



Enjoy your skylight.